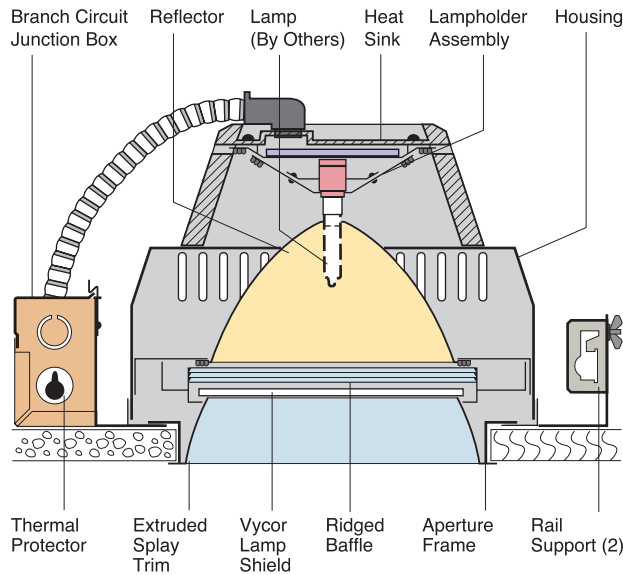


N570

Hospital Examination Light Q400-500W T-4 Tungsten Halogen Lamp



Optics and Applications

An asymmetric hydroformed reflector projects intense illumination in the 4' x 7' bed area. Somewhat more light is directed to the head and thorax than the feet. Lamp color temperature is 3000° Kelvin for accurate patient evaluation. Fixed ceiling mount over the bed eliminates the problems encountered with adjustable units. Intensive care areas or emergency rooms where critical procedures are performed frequently use two fixtures per bed for doubled footcandle levels.

Design Features

A two section cast aluminum heat sink cools by convection and conduction. Interior air ducting baffles keep the critical lamp seal under 350° C for full rated 2000 hour lamp life or approximately eight years average intermittent use. The parabolic splay trim incorporates integral matte black ridged baffles for brightness control and a high temperature Vycor lamp shield to protect the patient. The lower assembly has torsion spring retention for tight ceiling fit and may be cleaned and relamped in position or removed for disinfectant cleaning. Maximum ceiling thickness 1". Relamp from below.

Finish

The splay trim is painted matte white. Housing, ridged baffle and heat sinks are matte black. Steel parts are phosphated for corrosion resistance, before painting.

General

Fixtures are pre-wired and thermally protected, UL and C-UL listed for eight wire 90°C branch circuit wiring. Union made IBEW. Luminaire Efficiency Rating (LER) data do not apply.

Accessories

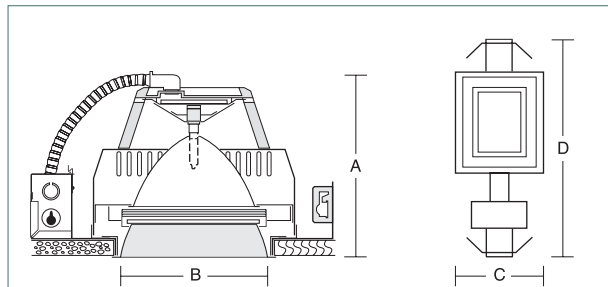
- A Satin aluminum trim.
- Z Bronze trim.
- R2 26" support rails.
- R5 52" support rails.
- W250 Correct focal position for 250W T-4 lamp.
- WRL Wattage restriction label, specify wattage.

Matching Units

Night light [Page N2](#)

* Click for link to pages in blue.

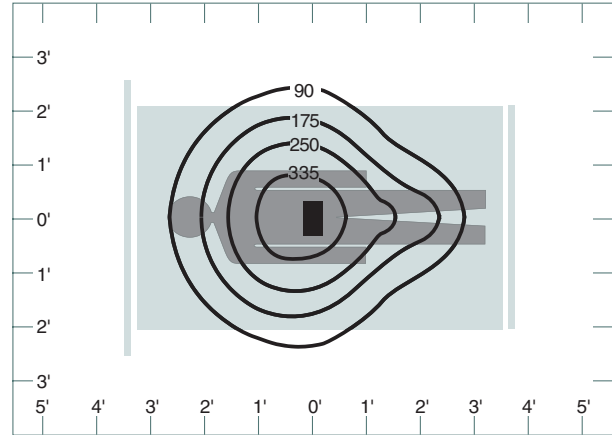
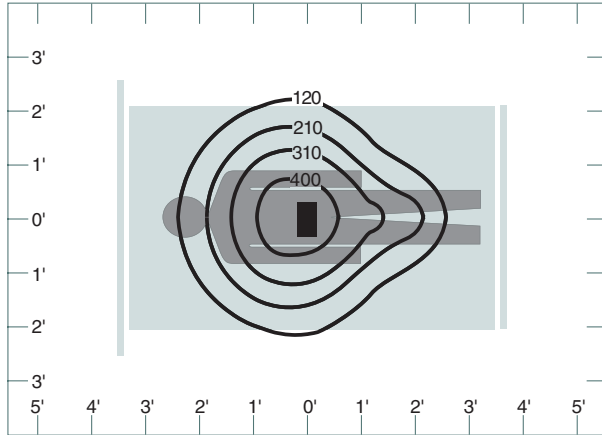
Dimensions and Lamps



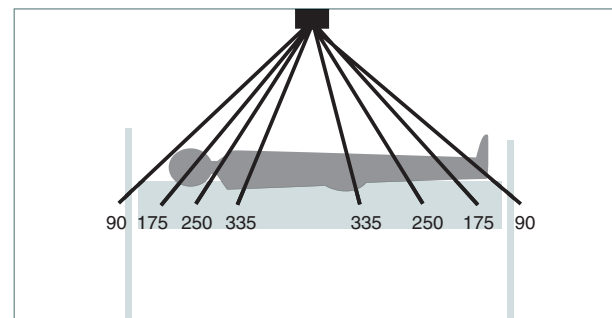
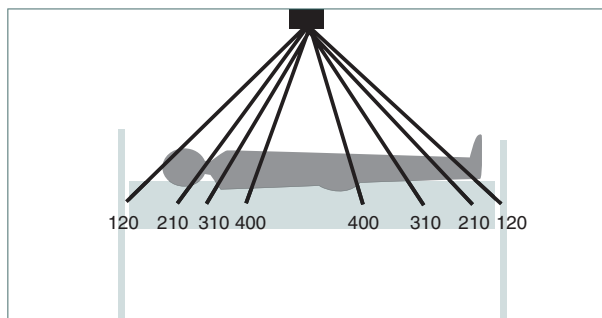
Number	A Depth	B Aperture	C Width	D Length	Lamp
N570	12" 305mm	6 1/4" x 9 1/4" 150 x 235mm	10 1/2" 267mm	23 1/2" 597mm	Q400-500W T-4 Mini-can Frosted

N1 N570 Examination Light

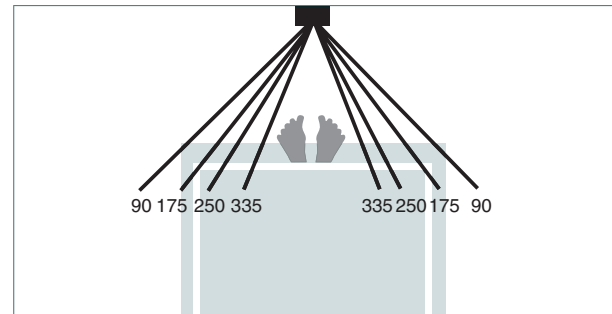
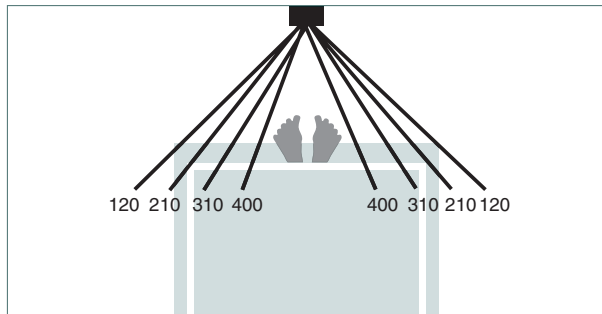
Footcandle Distribution Data: Plan View



Side View



Front View



Ceiling height 8'

Lamp Q500 T-4 Tungsten Halogen Frosted. Work plane 3' 6" above floor.

Ceiling height 8' 6"

Lamp Q500 T-4 Tungsten Halogen Frosted. Work plane 3' 6" above floor.

Photometric Data

Footcandle levels will increase as the bed is raised. Higher ceiling rooms will show lower footcandle levels at bed height than rooms with lower ceilings. Lamp life can be extended to over fifteen years of average use by selecting 130 volt lamps. Footcandle levels will drop by 25%.

Installation

The unit should be installed with its longitudinal axis perpendicular to the length of the bed. An arrow is cast into the upper heat sink to orient the fixture to the wall behind the patient's head. If two units are used, as in intensive care areas, an even light pattern will result if one arrow points to the head and one arrow points to the feet.

Notes

1. All values are expressed in footcandles.
2. The work plane, or top surface of the bed plus patient depth, is assumed to be 3' 6" above the floor.
3. Fixture location is centered over the width of the bed 45" from the wall behind the head of the bed.